

Support Tables

(Dimensions in mm)

5 mm wide rolled and galvanized steel support bearers

manufactured to DIN EN 10025,
dimensional tolerances DIN EN 10058

farrowing pens free span up to	Picco + Porco	Mix- cast iron	Top-cast iron Step-cast iron
1200 mm	60 x 5 mm	80 x 5 mm	–
1800 mm	80 x 5 mm	90 x 5 mm	–
2600 mm	100 x 5 mm	100 x 5 mm	100 x 5 mm
3000 mm	100 x 5 mm	120 x 5 mm	120 x 5 mm

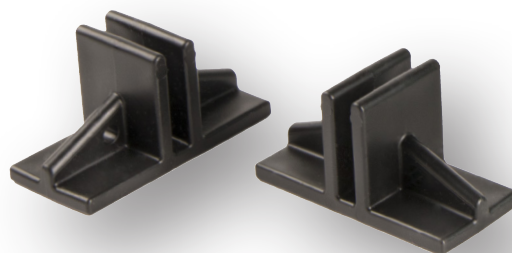
All dimensions are only recommendations.

They do not eliminate the need for the static load analysis for each individual project.

flatdecks free span up to	Picco 200-500	Piccolino 450+451	Piccolino 800-802 Piccoletto 810
1600 mm	60 x 5 mm	60 x 5 mm	80 x 5 mm
2400 mm	80 x 5 mm	80 x 5 mm	100 x 5 mm
3000 mm	100 x 5 mm	100 x 5 mm	100 x 5 mm

All dimensions are only recommendations.

They do not eliminate the need for the static load analysis for each individual project.



Support foot for steel support beams

For installations of our slats and heat pads in farrowing pens it is required to use **5 mm wide rolled and galvanized steel support beams**, manufactured to DIN EN 10025, dimensional tolerances to DIN EN 10058 or of 5 mm wide stainless steel beams. For the required support height consult our „**support tables**“ from above (only recommendations).

Due the temperature dependant dimensional variations of the various materials, the plastic slats including cut-offs, cast iron slats and heat pads must be installed **directly in sequence** one after the other within the same floor system.